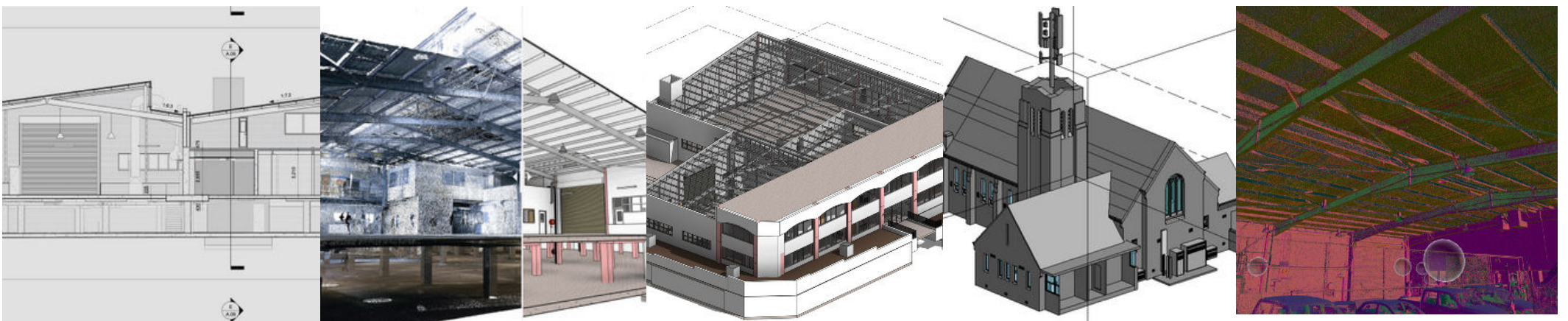


Scenario-based Comparison:

# When to Choose a 3D Laser Scanning Plan, What type of Plan & How much DO they cost?



**Problem**

**Detailed As-Built Model**

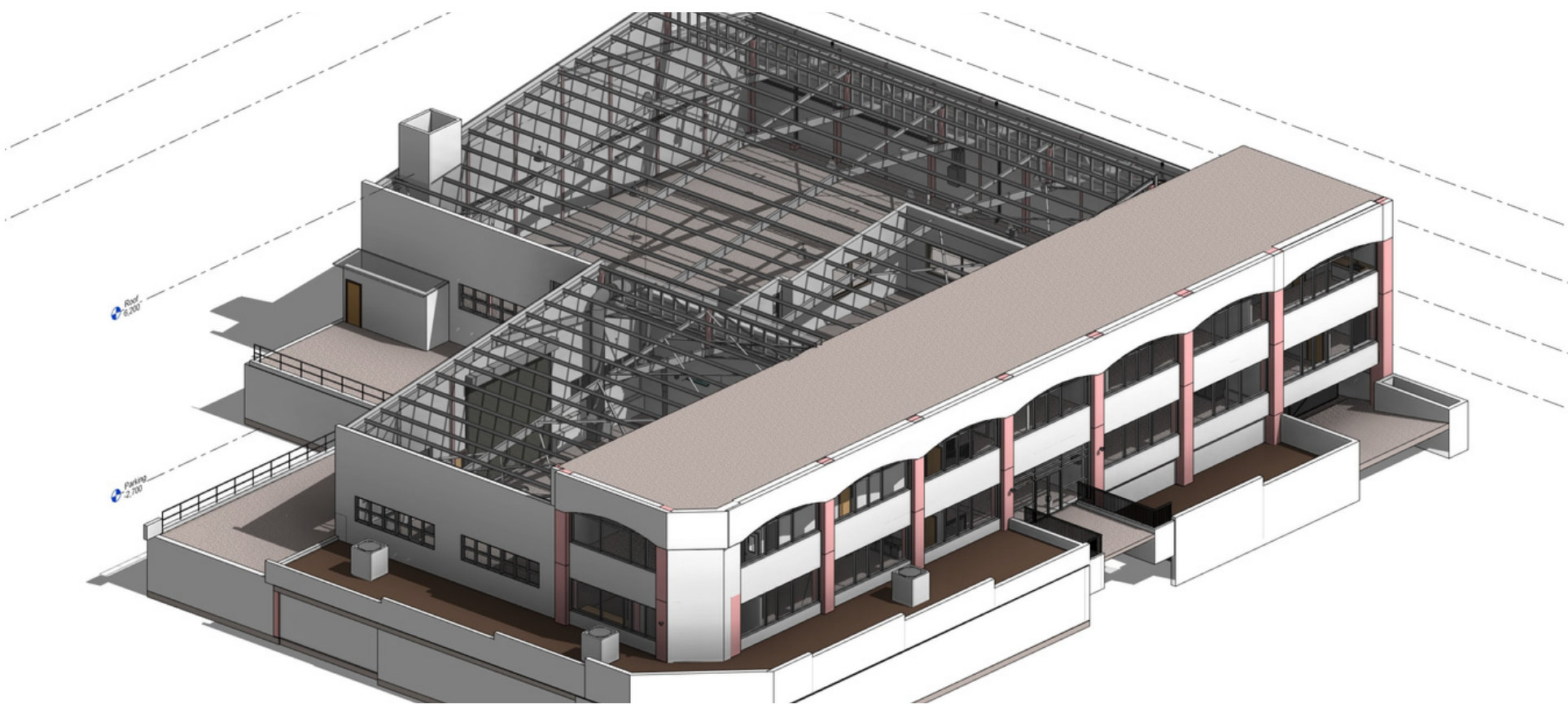
**Solution**

**Scan-to-Model**

**Description**

**When intricate 3D models of existing conditions are crucial for your projects, Scan-to-Model delivers.**

**It's ideal for companies seeking to visualize complex spatial and structural elements and streamline execution.**



**AVIAN**

## Problem

**Comprehensive BIM  
Integration**

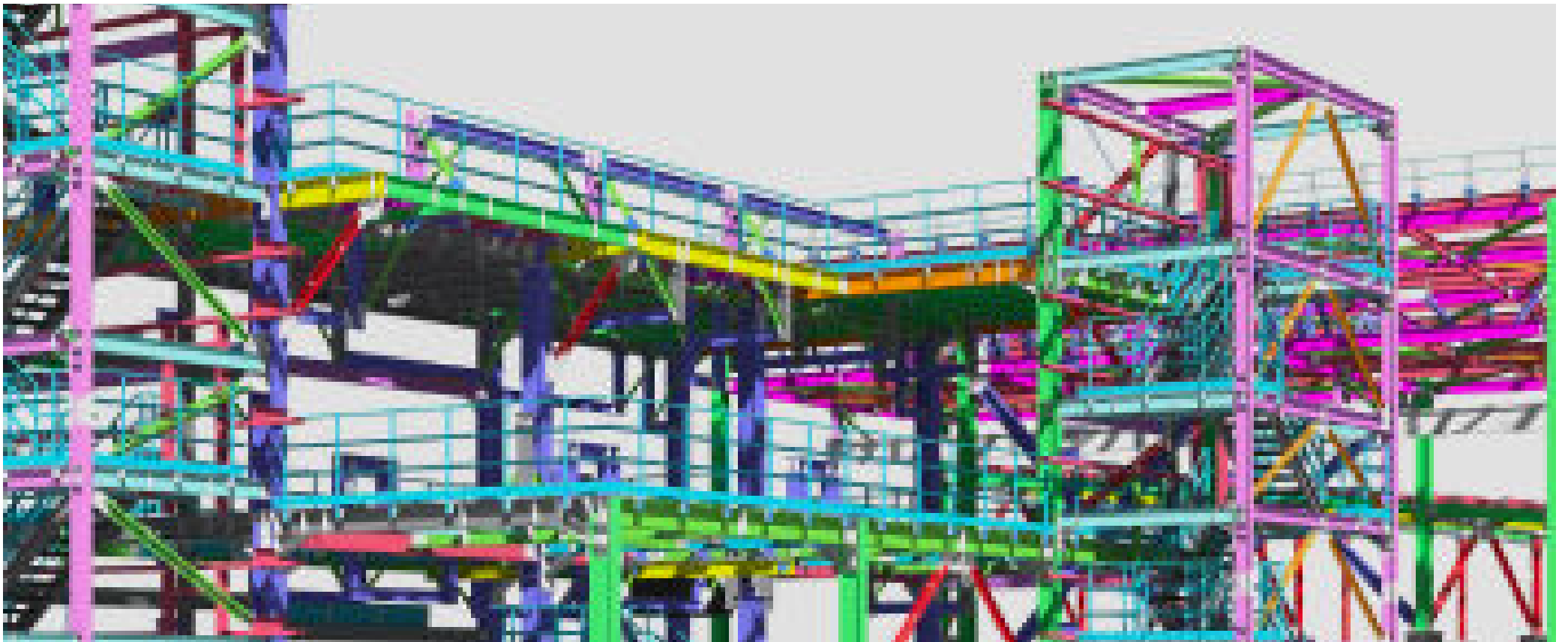
## Solution

**Scan-to-BIM**

## Description

**For engineers requiring seamless BIM integration and data-rich insights, Scan To BIM is the answer.**

**It's designed to elevate construction & engineering projects with intelligent data insights.**



**AVIAN**

## Problem

**Immersive Virtual Experience**

## Solution

**3D Visualisations**

## Description

**Architects, engineers and construction companies benefit from 3D Visualisations and Virtual Tours to provide immersive experiences to stakeholders, project teams and investors.**

**Perfect for showcasing designs, progress, and project highlights providing essential context.**



**AVIAN**

## Problem

**Streamlined Cloud Collaboration**

## Solution

**Scan To Cloud**

## Description

When seamless, secure cloud sharing and collaboration are priorities, Scan To Cloud delivers.

Architects, engineers and construction teams can effortlessly share, annotate and review project data across existing applications.



**AVIAN**

Criteria	Scan-to-Plan	Scan-to-Model	Scan To BIM	3D Virtual Tour	Scan To Cloud
Precise Measurements	✓	✓	✓		
3D Revit or CAD Models		✓	✓		
BIM Integration			✓		
Virtual Experience				✓	
Cloud Sharing					✓

Criteria	Scan-to-Plan	Scan-to-Model	Scan To BIM	3D Virtual Tour	Scan To Cloud
Precise Measurements	✓ (\$1,800+)	✓ (\$2,500+)	✓ (\$3,500+)		
3D Model Needed		✓ (\$3,500+)	✓ (\$4,500+)		
BIM Integration Needed			✓ (\$5,500+)		
Virtual Experience				✓ (\$1,500+)	
Cloud Sharing					✓ (\$1,750+)

*\*Please note that the actual cost for each service will vary based on the specific project requirements and other factors. It's recommended to reach out to Avian for a personalised quote based on your unique project needs.*



**Get In Touch**

**CONTACT US TODAY**

**Imagine a future where your architectural, construction, or engineering projects unfold seamlessly, with precision, efficiency and innovation by confidently choosing the perfect 3D laser scanning plan that aligns with your unique needs.**

**Book with Avian Australia today and see your projects elevate to new heights.**

The Avian logo consists of the word "AVIAN" in a bold, white, sans-serif font, centered within a dark blue rectangular background.

**Faster–Safer–Smarter**

**[www.avian.net.au](http://www.avian.net.au)**

**[info@avian.net.au](mailto:info@avian.net.au)**